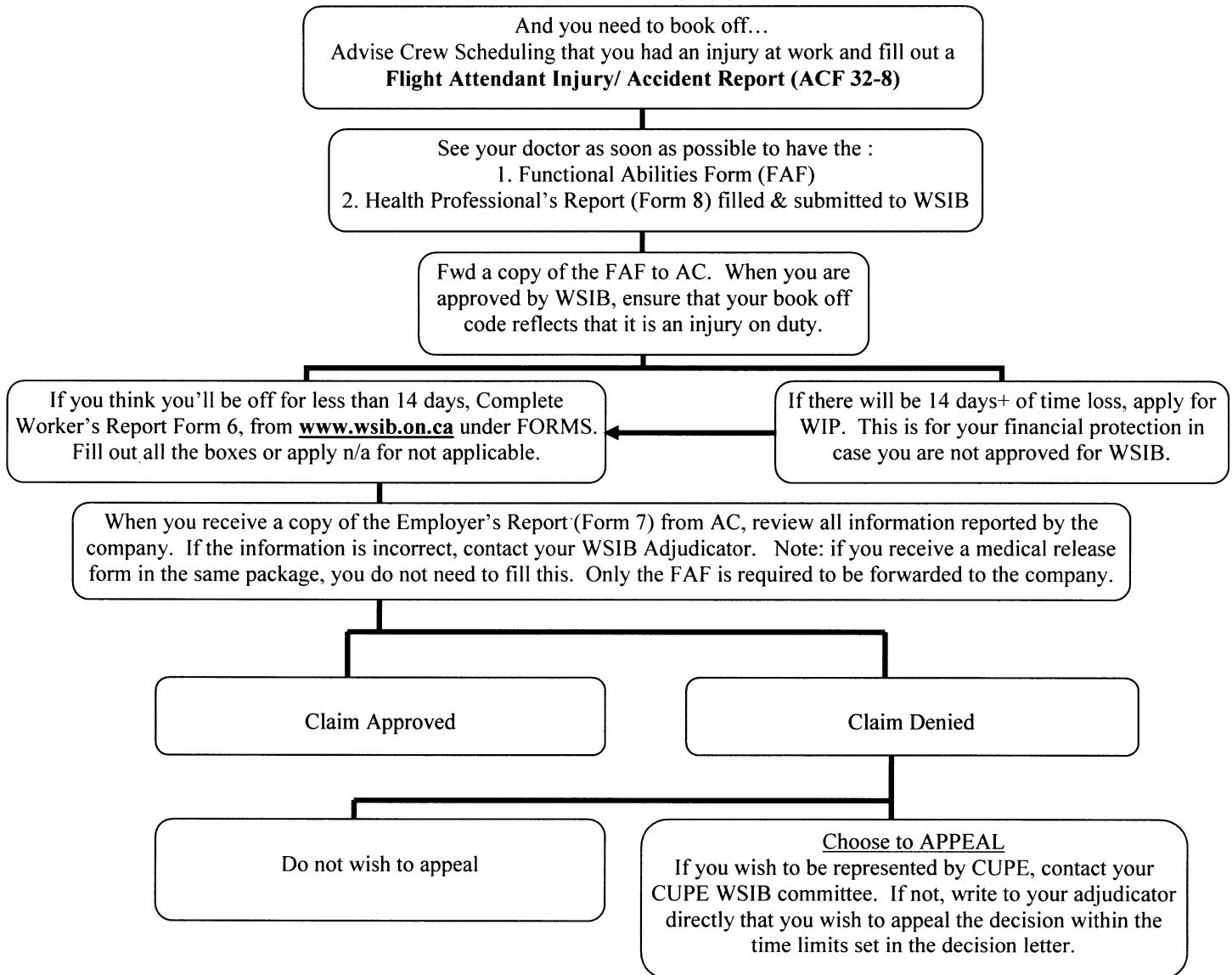


If You Are Injured At Work



- If you have any questions regarding your WSIB claim, contact the CUPE WISB committee at **(416) 798-3399 ext 259**
- There is a WSIB Claims pamphlet available at the local Health & Safety Office. This is also available online at www.accomponent.ca. Follow the links to the WSIB committee web link.
- If you have questions regarding WIP, contact the CUPE WIP Administrative Consultant at **(416) 798-3399 ext 258**
- If you are approved for Worker's Compensation, you will be reimbursed any sick days lost into your sick bank. Your book off should not be counted towards your CAMS (Corporate Absenteeism Management System) program.
- Ensure you keep a copy of all your paperwork and note down who you spoke to and when